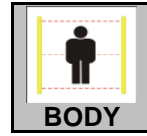
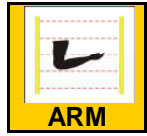
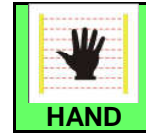
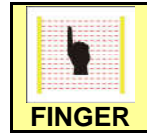
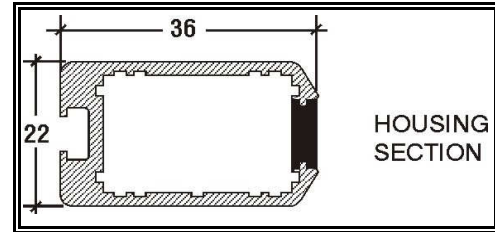
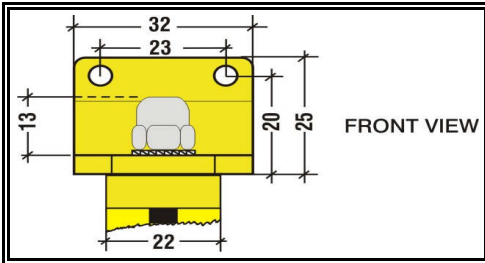


Table protected heights and total heights for the light curtain Model LC3 PXXX Fixing SMO

	Resolution	P001	P018	P036	P040	P080	P120	P150	P160	P200	P240	P280
Nr. Beam	Respos time	Height (HT)	Height (HP) (HT)	Height (HP) (HT)	Height (HP) (HT)	Height (HP) (HT)	Height (HP) (HT)	Height (HP) (HT)	Height (HP) (HT)	Height (HP) (HT)	Height (HP) (HT)	Height (HP) (HT)
1	10 ms	190										
2 x 2	12 ms						240 365	300 425	320 445	400 525	480 605	560 685
3 x 3	14 ms		144 269	160 285	320 445	480 605	600 725	640 765	800 925	960 1085	1120 1245	1245
4 x 4	16 ms	108 233	216 341	240 365	480 605	720 845	900 1025	960 1085	1200 1325	1440 1565	1680 1805	1805
5 x 5	18 ms	144 269	288 413	320 445	640 765	960 1085	1200 1325	1280 1405	1600 1725	1920 2045		
6 x 6	20 ms	180 305	360 485	400 525	800 925	1200 1325	1500 1625	1600 1725	2000 2125			
7 x 7	22 ms	216 341	432 557	480 605	960 1085	1440 1565		1920 2045				
8 x 8	24 ms	252 377	504 629	560 685	1120 1245	1680 1805						
9 x 9	26 ms	288 413	576 701	640 765	1280 1405	1920 2045						
10 x 10	28 ms	324 449	648 773	720 845	1440 1565							
11 x 11	30 ms	360 485	720 845	800 925	1600 1725							
12 x 12	32 ms	396 521	792 917	880 1005	1760 1885							
13 x 13	34 ms	432 557	864 989	960 1085	1920 2045							
14 x 14	36 ms	468 593	936 1061	1040 1165								
15 x 15	38 ms	504 629	1008 1133	1120 1245								
16 x 16	40 ms	540 665	1080 1205	1200 1325								
17 x 17	42 ms	576 701	1152 1277	1280 1405								
18 x 18	44 ms	612 737	1224 1349	1360 1485								
19 x 19	46 ms	648 773	1296 1421	1440 1565								
20 x 20	48 ms	684 809	1368 1493	1520 1645								
21 x 21	50 ms	720 845	1440 1565	1600 1725								
22 x 22	52 ms	756 881	1512 1637	1680 1805								
23 x 23	54 ms	792 917	1584 1709	1760 1885								
24 x 24	56 ms	828 953	1656 1781	1840 1965								
25 x 25	58 ms	864 989	1728 1853	1920 2045								
26 x 26	60 ms	900 1025	1800 1925	2000 2125								
27 x 27	62 ms	936 1061	1872 1997	2080 2205								
28 x 28	64 ms	972 1097	1944 2069	2160 2285								
29 x 29	66 ms	1008 1133	2016 2141	2240 2365								
30 x 30	68 ms	1044 1169	2088 2213	2320 2445								
31 x 31	70 ms	1080 1205										
32 x 32	72 ms	1116 1241										
33 x 33	74 ms	1152 1277										
34 x 34	76 ms	1188 1313										
35 x 35	78 ms	1224 1349										
36 x 36	80 ms	1260 1385										



HP= Protected Height
HT= Total Height including orientable support brackets (SMO)
PXXX= Resolution of the light curtain (ES: P040= resolution 40mm)



Note: In the columns all the important dimensions for the various sizes are reported. For the hole interaxes 10 mm are to be deducted from the total height. On the drawings are indicated the quote for fixing holes.

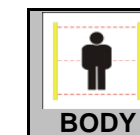
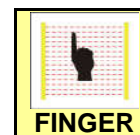


Via Pergolesi 30 - 20851 LISSONE (MB)
 TEL 039/24.57.587 - FAX 039/46.10.56
 mail: commerciale@elindco.it - web: www.elindco.it

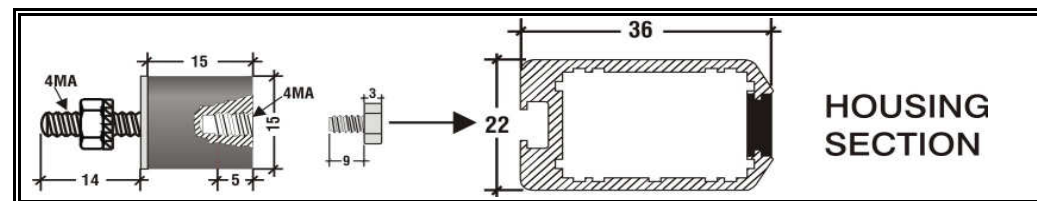
Lissone 05/03/2016

Table protected heights and total heights for the light curtain Model LC3 PXXX Fixing SEA

Table protected heights and total heights for the light curtain Model LC3 PXXX Fixing SEA																					
	Resolution	P001	P018	P036	P040	P080	P120	P150	P160	P200	P240	P280									
Nr. Beam	Respos time	Height (HT)	Height (HP) (HT)	Height (HP) (HT)	Height (HP) (HT)	Height (HP) (HT)	Height (HP) (HT)	Height (HP) (HT)	Height (HP) (HT)	Height (HP) (HT)	Height (HP) (HT)	Height (HP) (HT)	Height (HP) (HT)								
1	10 ms	140																			
2 x 2	12 ms						240	315	300	375	320	395	400	475	480	555	560	635			
3 x 3	14 ms			144	219	160	235	320	395	480	555	600	675	640	715	800	875	960	1035	1120	1195
4 x 4	16 ms	108	183	216	291	240	315	480	555	720	795	900	975	960	1035	1200	1275	1440	1515	1680	1755
5 x 5	18 ms	144	219	288	363	320	395	640	715	960	1035	1200	1275	1280	1355	1600	1675	1920	1995		
6 x 6	20 ms	180	255	360	435	400	475	800	875	1200	1275	1500	1575	1600	1675	2000	2075				
7 x 7	22 ms	216	291	432	507	480	555	960	1035	1440	1515			1920	1995						
8 x 8	24 ms	252	327	504	579	560	635	1120	1195	1680	1755										
9 x 9	26 ms	288	363	576	651	640	715	1280	1355	1920	1995										
10 x 10	28 ms	324	399	648	723	720	795	1440	1515												
11 x 11	30 ms	360	435	720	795	800	875	1600	1675												
12 x 12	32 ms	396	471	792	867	880	955	1760	1835												
13 x 13	34 ms	432	507	864	939	960	1035	1920	1995												
14 x 14	36 ms	468	543	936	1011	1040	1115														
15 x 15	38 ms	504	579	1008	1083	1120	1195														
16 x 16	40 ms	540	615	1080	1155	1200	1275														
17 x 17	42 ms	576	651	1152	1227	1280	1355														
18 x 18	44 ms	612	687	1224	1299	1360	1435														
19 x 19	46 ms	648	723	1296	1371	1440	1515														
20 x 20	48 ms	684	759	1368	1443	1520	1595														
21 x 21	50 ms	720	795	1440	1515	1600	1675														
22 x 22	52 ms	756	831	1512	1587	1680	1755														
23 x 23	54 ms	792	867	1584	1659	1760	1835														
24 x 24	56 ms	828	903	1656	1731	1840	1915														
25 x 25	58 ms	864	939	1728	1803	1920	1995														
26 x 26	60 ms	900	975	1800	1875	2000	2075														
27 x 27	62 ms	936	1011	1872	1947	2080	2155														
28 x 28	64 ms	972	1047	1944	2019	2160	2235														
29 x 29	66 ms	1008	1083	2016	2091	2240	2315														
30 x 30	68 ms	1044	1119	2088	2163	2320	2395														
31 x 31	70 ms	1080	1155																		
32 x 32	72 ms	1116	1191																		
33 x 33	74 ms	1152	1227																		
34 x 34	76 ms	1188	1263																		
35 x 35	78 ms	1224	1299																		
36 x 36	80 ms	1260	1335																		



HP= Protected Height
HT= Total Light curtain Height excluded M12 plug (SEA)
PXXX= Resolution of the light curtain (ES: P040= resolution 40mm)



Note: In the columns all the important dimensions for the various sizes are reported.



Via Pergolesi 30 - 20851 LISSONE (MB)
 TEL 039/24.57.587 - FAX 039/46.10.56
 mail: commerciale@elindco.it - web: www.elindco.it

Lissone 05/03/2016